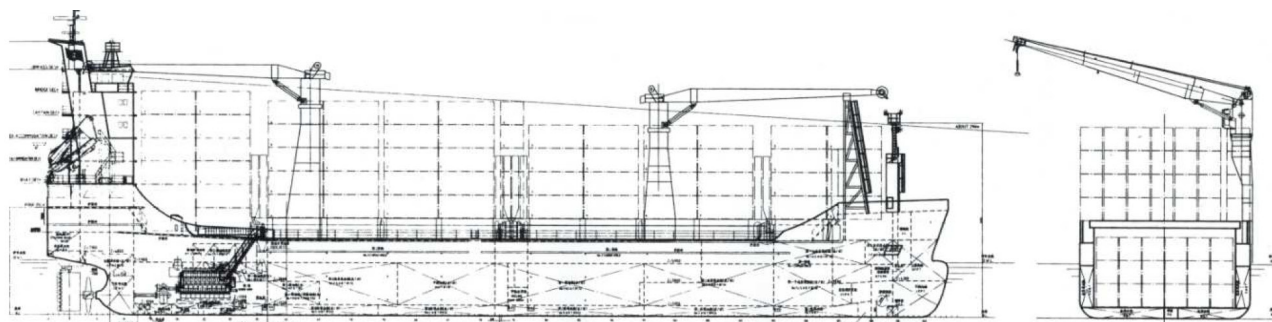




MARFRET SAUMATY

505 TEUS General Cargo Ship

IMO: 9262003 / Flag: LUXEMBOURG



QINGSHAN Shipyard Hull N° KS960308
Delivery Dec. 2003

MAIN PARTICULARS

- Length over all.....99.99 m
- Length between pp.....95.9 m
- Breadth.....18.8 m
- Depth to main deck.....8.4 m
- Height above kell.....35.0 m
- Summer draft.....6.65 m
- Deadweight.....5608 tons
- Max. Service Speed.....13.0 knots
 (scantling draught, 90% MCR, 15% power margin
 Standard conditions Wind 3, Sea 2, temperate
 climatic zone)

CLASS

- BV, + HULL, + MACH, General CargoShip,
 Unrestricted Navigation, + AUT-UMS.

TANK CAPACITIES (100%)

- Heavy fuel oil.....551 m³
- Marine diesel oil.....89 m³
- Fresh water.....100 m³
- Ballast water.....2132 m³

TONNAGE

- GT.....4462
- NT.....1988

MAIN ENGINE

- MAK (4 strokes).....9M32C
- MCR.....4320 kw @ 600 RPM
- 1 x Controlable Pitch Propeller.....4 Blades/D=4100 mm
- Bow thruster.....1 x 500 kw

FUEL OIL CONSUMPTION OF MAIN ENGINE

(LCV = 10.200 kcal/kg)

- DFOC at NCR.....aprx. 14 MT/day
- Cruising range.....aprx. 10000 NM

POWER SUPPLY

- Shaft Generator.....1 x 700 kw
- Diesel Generators.....2 x 570 kw
- Emergency Generator.....1 x 235 kw

CARGO HATCH COVER

- Type.....Steel folding type by hydraulic rams
- Stack weight.....36MT/20ft & 50MT/40ft

COMPLEMENT

- Crew of max 15 persons

CONTAINER CAPACITIES

With max. number of Containers
 IMO visibility guideline

- On deck (6 tiers).....141 TEU
- In hold.....364 TEU
- Total.....505 TEU

- Stack weight tank top.....72MT/20ft & 105MT/40ft
- Rows max. in holds/on hatches.....6/7 Rows
- Tiers max. in holds/on hatches.....3/6 Tiers

El. Plugs (for reefer Container)

- On deck.....72 TEU
- In hold N°2.....12 TEU

CARGO HANDLING

2 x 40 T SWL electro-hydraulic cranes, working
 radius from 2.1 m to 24.8 m

NAVIGATION EQUIPMENT

- 2 - Radar Plant with ARPA
- 1 - Auto Pilot / 1 Gyro compass
- 2 - DGPS navigator
- 1 - Speed log